



'PURPOSE BUILT FOR SERIOUS TOURING!'



SPONSORED BY THE POWER OF REDARC



\$34,990



WINNER BEST VALUE FOR MONEY MARLIN ULTIMATE REAR FOLD

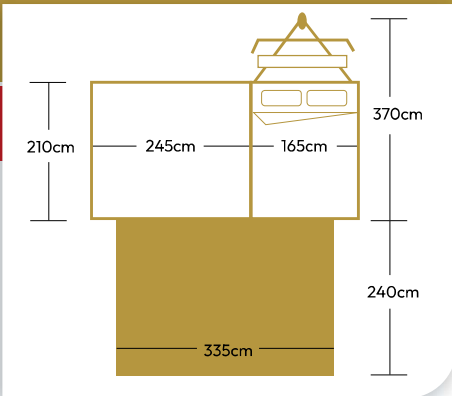
GO ANYWHERE, AT ANYTIME. NO LIMITS!



AUSSIE MADE SINCE 2006

MARLIN OUTBACK

2-4 Persons



KEY FEATURES

- ★ Australian Owned - Australian Made
- ★ Light Enough for Easy Towing
700kg Tare • 50kg Ball Weight
- ★ Easy 1-Person, 1-Pole Set Up in just 2 Minutes
- ★ Insulated Roof: Cool in Summer • Warm in Winter

MARLINCAMPERS.COM.AU

- FINANCE AVAILABLE
- 6 MONTH LAY BY WITH 10% DEPOSIT

EVERYTHING INCLUDED. NO UPGRADES REQUIRED.



The Marlin 'OUTBACK' is a fully-equipped, long-distance touring camper designed for travellers who want rugged capability, fast overnight setup, and complete off-grid independence — all in a lightweight, Australian-built package. Every feature is included. No variations. No confusion. Just a tough, refined touring system built for the real outback.

THIS IS THE MOST COMPLETE & INNOVATIVE, READY-TO-TOUR CAMPER MARLIN BUILDS!

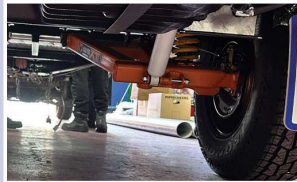


THE TOURING KITCHEN

Designed for travellers who move every day, the Outback kitchen is fast, organised, and always ready.

Oversized pantry drawer delivers huge, usable storage, paired with a built-in fridge so everything has its place and is ready to go. Everything remains accessible whether the tent is set up or packed away.

No tubs. No repacking. No wasted time.



ENGINEERED FOR REAL OFF-ROAD TRAVEL

The biggest leap in capability comes from the Cruisemaster Independent Suspension and matching hitch. This setup delivers smoother towing, better control on corrugations, improved articulation, and confidence over dunes, ruts, and rough tracks

It proved itself in the Simpson Desert, where the Outback handled undulating dunes and long corrugated stretches with ease.



OFF-GRID CAPABILITY

The Outback is built to stay off-grid longer, with a completely upgraded power and water system. Equipped with Renogy's heavy-duty off-grid system, the Outback delivers abundant power from a large lithium battery, a high-capacity inverter and ample solar. Generous water reserves and twin gas cylinders let you travel further and stay off-grid longer without compromise.

The Marlin Outback is designed specifically for long-term touring and remote adventures without worry.



LIGHTWEIGHT FOR EXTREME OFF-ROADING

After 4 years competing in Camper Trailer of the Year, we have learnt the importance of lightweight towing. From the Simpson Desert to the Victorian High Country, you will always go further in a Marlin.

ALL INCLUSIVE KITCHEN

- Heavy Duty Slide Out Kitchen
- Cutlery Drawer
- Extra Large Storage Drawer
- Recessed Stove Area
- Pack Away Collapsible Sink
- Additional Flip Over Bench Area
- Oversized Pantry Storage Drawer
- 40 Litre Premium Fridge/Freezer
- Brass/Chrome Premium Tap

TRAILER

OFF ROAD

- 700kg, 50kg Ball Weight
- Mechanical Brakes
- Cruisemaster Independent Suspension & Hitch
- Rear Recovery Point
- Side Hinged Trailer Access
- Tool Box with Extended Drawbar
- Stoneguard
- 2 x Pole Carrier
- Tie Down Rails
- Marine Carpet Lined Trailer Floor
- Spare Wheel Cover

OFF-GRID POWER PACK

- Renogy 200Ah Lithium Battery System
- Renogy 50A DC/DC Charger
- Renogy 35A AC/DC Charger
- Renogy 2000W Inverter
- 200W Solar Panel
- Permanent Power System
- Car & Solar Charging Inputs
- Internal and External 12v Outlets

WATER & GAS

- 160 Litre Water Capacity
- Hot Water System with Shower
- Double Jerry Can and Gas Bottle Holders
- External Water Inlet (For Alternate Water Source for Showers)
- Water Level Gauge
- External Hand Pump
- External Tap (For Easy Water Access)

DISCLAIMER: Prices and availability are subject to change. Marlin Campers will inform you of any price fluctuation where possible.